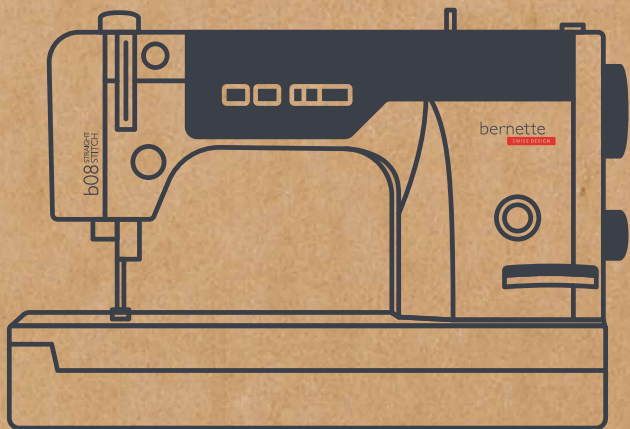


STRAIGHT
b08
STITCH



Presser Foot Set
DIY Sewing

bernette

SWISS DESIGN

Straight Stitch Foot Set for Fine Fabrics



Straight Stitch Hemmer



Straight Stitch Foot with Non-Stick Sole



Adjustable Binder Attachment



Zipper Foot



Leather Roller Foot



Invisible Zipper Foot



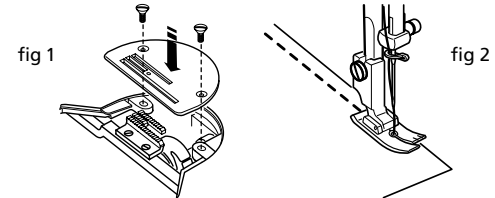
Straight Stitch Foot Set for Fine Fabrics

Straight Stitch Foot Set for Fine Fabrics

This presser foot set is ideally suited for all straight-stitch work with fine fabrics. The small round stitch hole of the presser foot supports the material during sewing and the polished surface supports the transportation of fine fabrics as silk or velvet, chiffon, etc. Together with the slightly raised stitch plate it optimizes the stitch quality on finer fabrics.



- Raise the presser foot
- Attach the needle plate for fine fabric (fig 1)
- Attach the presser foot
- Place the fabric under the foot
- Lower the presser foot and start sewing (fig 2)
- For sewing markings of presser foot are helpful



Recommended Standard Settings

Thread Tension	4 - 5
Stitch Length	0.5 - 4.0
Foot Pressure	3 - 5

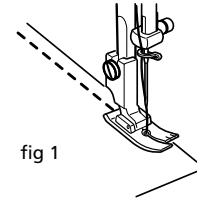
Straight Stitch Foot with Non-Stick Sole

Straight Stitch Foot with Non-Stick Sole

The non-stick sole ensures smooth gliding over difficult-to-feed materials such as leather, plastic, vinyl or similar. Straight Stitch Foot with Non-Stick Sole is specially suited for straight stitching on "sticky" materials such as leather, plastic or oilcloth. It ensures an even, pucker-free straight-stitch.



- Attach the presser foot
- Place the fabric under the foot
- Lower the presser foot and start sewing (fig 1)



Recommended Standard Settings

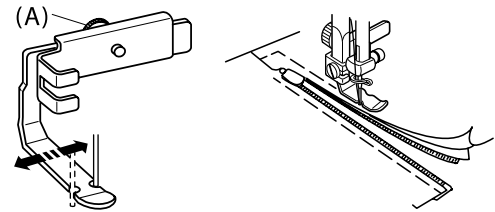
Thread Tension	4 - 5
Stitch Length	0.5 - 4.0
Foot Pressure	3 - 5

Zipper Foot

Due to the narrow shape, zippers in various versions can be sewn in easily. The fabric is fed evenly while you can sew along the coils very closely. Also useful to sew piping.



- Attach the Zipper Foot
- To adjust its position, loose screw (A)
- Position the presser foot
 - To sew the right side of the zipper, set the zipper foot to the right of needle
 - To sew the left side of the zipper, set the zipper foot to the left side of needle
- Tight screw (A)



Recommended Standard Settings

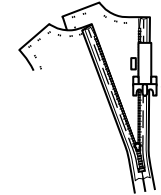
Thread Tension	4 - 5
Stitch Length	0.5 - 4.0
Foot Pressure	3 - 5

Invisible Zipper Foot

This foot is designed to sew concealed (invisible) zippers into the seam of garments and accessories. As the zipper is invisible afterwards, an especially elegant look is achieved.



- Place the opened zipper on the right side of the fabric and pin in place
- Sew in the first half of the zipper guiding the row of teeth through the left groove of the presser foot
- Sew down to the slider, then remove the fabric
- Sew the right and left sides of the zipper to the ends of the zipper opening
- Guide the row of teeth through the groove of the presser foot



Recommended Standard Settings

Thread Tension	4 - 5
Stitch Length	0.5 - 4.0
Foot Pressure	3 - 5

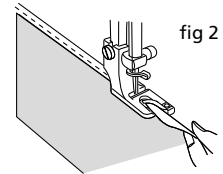
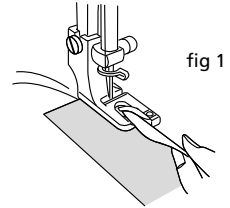
Straight Stitch Hemmer

Straight Stitch Hemmer

This presser foot enables you to create professional-looking hems. It folds the fabric twice before stitching, which results in a neat straight stitched narrow hem. The Straight Stitch Hemmer Foot can handle also fine to light weight fabrics that makes it a perfect companion for delicate projects.



- Attach the straight stitch hemmer foot
- Place fabric edge under the presser foot (wrong side up) so that it is almost flush with the inside edge of the right toe (fig 1)
- Sew 4-5 stitches
- Raise presser foot and needle
- Pull fabric and the threads backwards (allow enough thread)
- Use the left hand to hold the 4 threads
- Use right hand to hold the edge of the fabric as you insert it into the spiral guide of the foot
- Lower the foot
- Continue sewing. While sewing, fold the fabric slightly and hold it to the left. Guide evenly. (fig 2)



Recommended Standard Settings

Thread Tension	4 - 5
Stitch Length	0.5 - 4.0
Foot Pressure	3 - 5

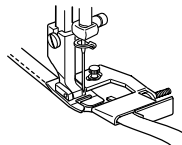
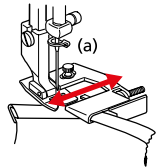
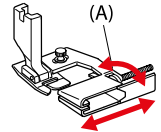
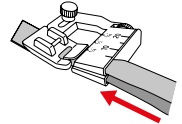
Adjustable Binder Attachment

Adjustable Binder Attachment

This presser foot is used to sew pre-folded bias tape over the edge of a project, rapidly and evenly. Bias tape and fabric are guided along the edge of the presser foot for accurate sewing results. It can also be used with bias tape alone to create straps and ties.



- Feed the bias tape into the presser foot. (Fig. 1)
- Use the front adjusting wheel (A) to adjust the width of the guide to the width of the bias tape (Fig. 2)
- Attach the foot
- Loosen the rear screw (a) on the presser foot and move the tape guide to the left or right. (Fig. 3)
- Tighten the rear screw. (Fig. 3)
- Sew while guiding the fabric with your left hand and the tape with the other hand. (Fig.4)



Recommended Standard Settings

Thread Tension	3 - 5
Stitch Length	0.5 - 4.0
Foot Pressure	3 - 5

Leather Roller Foot

Leather Roller Foot

This presser foot excels at working on „sticky“ materials such as leather, suede or plastic. It's also ideal for sewing multiple layers of fabric. The wheel with its textured surface helps roll over fabric easily. It also makes the application of braiding and cording in home decoration fast and easy.



- Attach the presser foot
- Lower the foot and needle
- Adjust position of roller so it lies as close as possible to the needle (fig 1+2)
- Sew slowly
- For threading the machine with attached foot, press and hold screw to turn the roller arm to the left and back (fig 3)

Note: before first use and with every day use: give 1-2 drops of sewing machine oil into the slit (3). Wipe away excess oil around the slit (fig 4).

fig 1

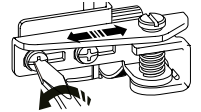


fig 2

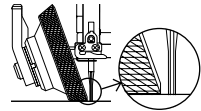


fig 3

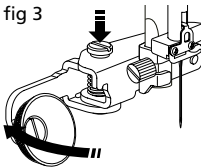


fig 4

